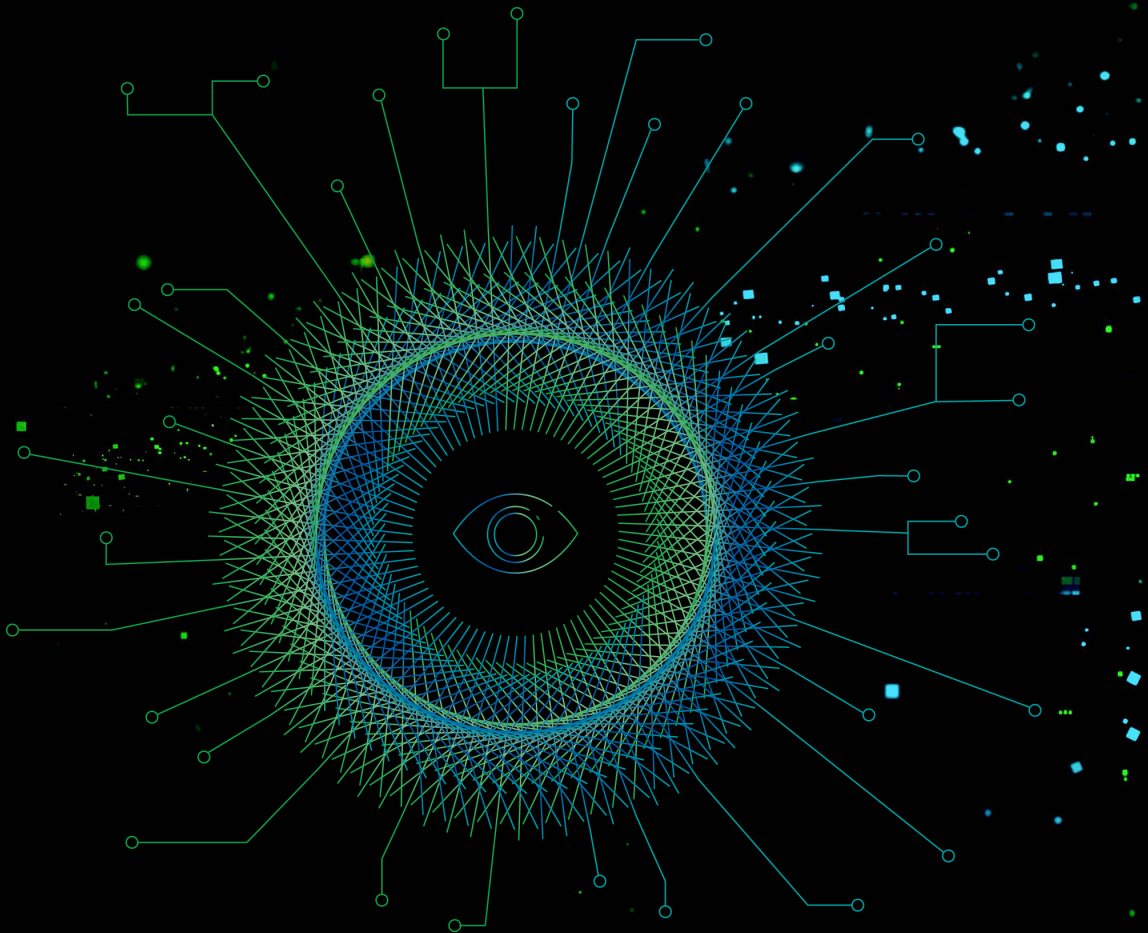


JVEJOURNALS.COM

ISSN  
ONLINE  
2669-2961

December 2021  
VOL 1  
ISSUE 2

M A I N T E N A N C E  
R E L I A B I L I T Y  
A N D C O N D I T I O N  
M O N I T O R I N G



**Editor in Chief**

Jyoti K. Sinha

Department of Mechanical, Aerospace and Civil Engineering,  
The University of Manchester, (UK)

jyoti.sinha@manchester.ac.uk

**Editorial Board**

Gopinath Chattopadhyay

Federation University, (Australia)

g.chattopadhyay@federation.edu.au

Stephan Heyns

University of Pretoria, (South Africa)

stephan.heyns@up.ac.za

Andrew K S Jardine

University of Toronto, (Canada)

jardine@mie.utoronto.ca

Lin Jing

Beihang University, (Beijing)

linjing@buaa.edu.cn

Uday Kumar

Luleå University of Technology, (Sweden)

uday.kumar@ltu.se

David Mba

De Montfort University, Leicester, (UK)

david.mba@dmu.ac.uk

# MARC Maintenance, Reliability and Condition Monitoring

## Aims and Scope

MARC is devoted to a broad area with multi-disciplinary interests in the fields of plant maintenance, asset management, reliability, condition monitoring and related areas, ranging from fundamental research to real-world applications.

The list of principal topics:

- Vibro-acoustics monitoring
- Asset management
- Condition-based maintenance
- Condition monitoring
- eMaintenance, mobile technology
- Health, safety and environment
- Sensing and instrumentation
- Life cycle cost optimization
- Machine health monitoring
- Machine lube oil analysis and monitoring
- Maintenance auditing
- Prognostics and health management
- Maintenance organization
- Maintenance performance measurement
- Non-destructive testing
- Manufacturing process monitoring
- Plant outage
- Turnaround management
- Reliability, maintainability and risk
- Robot based monitoring and diagnostics
- AI technologies
- Signal and image processing methods
- Intelligent fault diagnosis

**All published papers are peer reviewed and crosschecked by plagiarism detection tools.**

More information is available online <https://www.jvejournals.com>

**The journal material is referred:**

**GOOGLE SCHOLAR:** <https://scholar.google.com>

**CROSSREF:** <https://www.crossref.org>

**Internet:** <https://www.jvejournals.com>

**E-mail:** [publish@jvejournals.com](mailto:publish@jvejournals.com)

**Publisher:** JVE International Ltd., Geliu ratas 15A, LT-50282, Kaunas, Lithuania

# MARC

## Maintenance, Reliability and Condition Monitoring

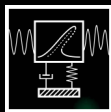
---

DECEMBER 2021. VOLUME 1, ISSUE 2, PAGES (26-86), ISSN ONLINE 2669-2961

### Contents

<b>CLASSIFICATION OF A CRACKED-ROTOR SYSTEM DURING START-UP USING DEEP LEARNING BASED ON CONVOLUTIONAL NEURAL NETWORKS</b>	<b>26</b>
NIMA REZAZADEH, MOHAMMAD-REZA ASHORY, SHILA FALLAHY	
<b>CRACK IDENTIFICATION FOR BRIDGE CONDITION MONITORING USING DEEP CONVOLUTIONAL NETWORKS TRAINED WITH A FEEDBACK-UPDATE STRATEGY</b>	<b>37</b>
TONG TONG, JING LIN, JIADONG HUA, FEI GAO, HAN ZHANG	
<b>IMPACT OF CLIMATE CHANGE ON RAILWAY OPERATION AND MAINTENANCE IN SWEDEN: A STATE-OF-THE-ART REVIEW</b>	<b>52</b>
ADITHYA THADURI, AMIR GARMABAKI, UDAY KUMAR	
<b>A NUMERICAL STUDY OF ROTOR ECCENTRICITY AND DYNAMIC LOAD IN INDUCTION MACHINES FOR MOTOR CURRENT ANALYSIS BASED DIAGNOSTICS</b>	<b>71</b>
HAIYANG LI, ZHEXIANG ZOU, XIUQUAN SUN, FENGSHOU GU, ANDREW D. BALL	





JVE INTERNATIONAL