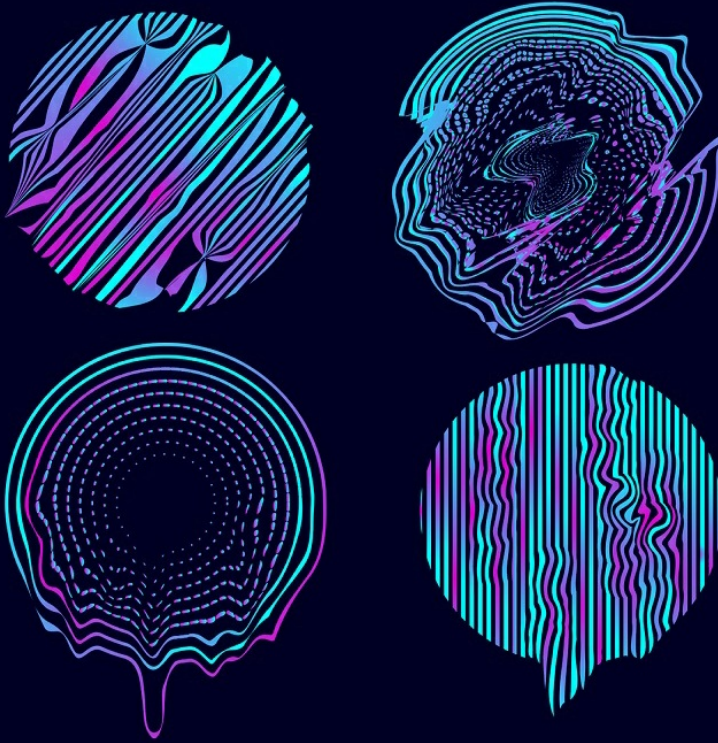


Applied Mathematics

Interdisciplinary Applications of Mathematics

Mathematical Models in Engineering



Editor in Chief

Minvydas Ragulskis	Kaunas University of Technology, (Lithuania)	minvydas.ragulskis@ktu.lt
Editorial Board		
Hojjat Adeli	The Ohio State University, (United States)	adeli.1@osu.edu
Tahir Cetin Akinci	Istanbul Technical University, (Turkey)	cetinakinci@hotmail.com
Mahmoud Bayat	The University of Texas at Arlington, (United States)	ranjan@rowan.edu
Rafał Burdzik	Silesian University of Technology, (Poland)	rafal.burdzik@polsl.pl
Jinde Cao	Southeast University, (China)	jdcao@seu.edu.cn
Maosen Cao	Hohai University, (China)	cmszhy@hhu.edu.cn
Sezgin Ersoy	Marmara University, (Turkey)	ersoy@marmara.edu.tr
Hee-Chang Eun	Kangwon National University, (South Korea)	heechang@kangwon.ac.kr
Wen-Hsiang Hsieh	National Formosa University, (Taiwan)	allen@nfu.edu.tw
Vassilios Kappatos	Center for Research and Technology Hellas, (Greece)	vkappatos@certh.gr
Sunil Kumar	National Institute of Technology, (India)	skumar.math@nitjsr.ac.in
Giedrius Laukaitis	Kaunas University of Technology, (Lithuania)	giedrius.laukaitis@ktu.lt
Petr Lepšík	Technical University of Liberec, (Czechia)	petr.lepsik@tul.cz
Chen Lu	Beihang University, (China)	luchen@buaa.edu.cn
Doina Pisla	Technical University of Cluj-Napoca, (Romania)	doina.pisla@mep.utcluj.ro
Vinayak Ranjan	Rowan University, (United States)	vinayak.ranjan@bennett.edu.in
Julia Irene Real	Politechnical University of Valencia, (Spain)	jureaher@tra.upv.es
Eligijus Sakalauskas	Kaunas University of Technology, (Lithuania)	eligijus.sakalauskas@ktu.lt
G. Eduardo Sandoval-Romero	The National Autonomous University of Mexico, (Mexico)	eduardo.sandoval@ccadet.unam.mx
Reza Serajian	University of California, (United States)	rsera004@ucr.edu
Agnieszka Wylomanska	Wroclaw University of Technology, (Poland)	agnieszka.wylomanska@pwr.edu.pl
Xiao-Jun Yang	China University of Mining and Technology, (China)	xjyang@cumt.edu.cn

MME Mathematical Models in Engineering

Aims and Scope

MME publishes mathematical results which have relevance to engineering science and technology. Formal descriptions of mathematical models related to engineering problems, as well as results related to engineering applications are equally encouraged.

Applications of mathematical models in financial engineering, mechanical and aerospace engineering, bioengineering, chemical engineering, computer engineering, electrical engineering, industrial engineering and manufacturing systems, nonlinear science and technology are especially encouraged.

Mathematical models of interest include, but are not limited to, ordinary and partial differential equations, nonlinear analysis, stochastic processes, calculus of variations, operations research.

All published papers are peer reviewed and crosschecked by plagiarism detection tools.

More information is available online <https://www.extrica.com/journal/mme>

The journal material is referred:

Scopus: ELSEVIER Bibliographic Database

EBSCO: Discovery Services (Complementary Index)

Gale Cengage Learning:

Academic OneFile Custom Periodical

Computer Database

Science in Context

Scilit: <https://www.scilit.net>

Asian Science Citation Index (ASCI): <https://ascidatabase.com>

Dimensions: <https://www.dimensions.ai>

Semantic Scholar: <https://www.semanticscholar.org>

Google Scholar: <https://scholar.google.com>

JGate: <https://jgateplus.com>

CORE: <https://core.ac.uk>

BASE (Bielefeld Academic Search Engine): <https://www.base-search.net>

Ulrich's Periodicals Directory: <https://ulrichsweb.serialssolutions.com>

CNKI Scholar: <http://eng.scholar.cnki.net>

cnPLINKer (CNPIEC): <http://cnlinker.cnpeak.com>

WanFang Data: <https://www.wanfangdata.com.cn>

TDNet: <https://www.tdnet.io>

MIAR, Universitat de Barcelona: <https://miar.ub.edu>

JournalTOCs: <https://www.journaltoocs.ac.uk>

WorldCat Discovery Services: <https://www.oclc.org/en/worldcat-discovery.html>

MyScienceWork: <https://www.mysciencework.com>

Crossref: <https://search.crossref.org>

Content is archived in **Martynas Mazvydas National Library of Lithuania**

Internet: <https://www.extrica.com>

E-mail: publish@extrica.com

Publisher: Extrica

Contents

A NEW MATHEMATICAL MODEL FOR OPTIMIZING LASER CUTTING PARAMETERS TO IMPROVE FABRIC QUALITY	202
LISA SAMURA, MUHAMAD DANIL PRATAMA, VALENTINUS GALIH VIDIA PUTRA, FANDI ACHMAD, YUSRIL YUSUF, FADIL ABDULLAH	
LANDSLIDE SUSCEPTIBILITY MAPPING OF PHEWA WATERSHED, KASKI, NEPAL	217
BIMAL BHADUR KUNWAR, NANTAKAN MUENSIT, KUAANAN TECHATO, SAROJ GYAWALI	
FINDING THE DOMINATION NUMBER OF TRIANGULAR BELT NETWORKS	234
SULTAN ALMOTAIRI, OLAYAN ALHARBI, ZAID ALZAID, M. YASSER HAUSAWI, JABER ALMUTAIRI, BASMA MOHAMED	
GENERALISED POISSON-NEW LINEAR-EXPONENTIAL DISTRIBUTION	241
BINOD KUMAR SAH, SURESH KUMAR SAHANI	
A COMPREHENSIVE EXAMINATION OF UTILIZING NEUTROSOPHIC PARAMETERS IN MANUFACTURING INDUSTRY THROUGH QUEUEING APPROACH	251
LOGAPRIYA B, VIDHYA D, SHOBANA A, NIRMALA V, GAYATHRI P	
A SANDWICH-TYPE WINKLER-PASTERNAK DOUBLE ELASTIC FOUNDATION BEAM MODEL FOR ANALYSIS OF NUT COLUMN LOAD TRANSFER SYSTEMS OF SHIPLIFTS	264
LEKANG LIAO	

SHORT DESCRIPTION ABOUT THIS CATEGORY

Mathematical modelling helps to create a mathematical representation of a real-world scenario to make a prediction or provide insight into the complex behavior of real-world systems. The journal publishes mathematical results which have relevance to engineering science and technology. Mathematical models of interest include, but are not limited to, ordinary and partial differential equations, nonlinear analysis, stochastic processes, calculus of variations, and operations research.

