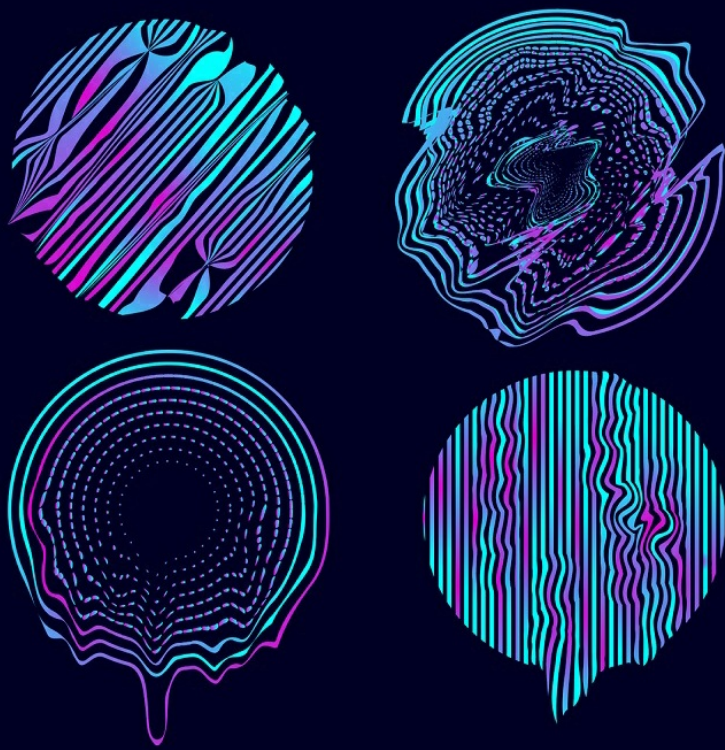


Applied Mathematics

Interdisciplinary Applications of Mathematics

# Mathematical Models in Engineering



**Editor in Chief**

Minvydas Ragulskis	Kaunas University of Technology, (Lithuania)	minvydas.ragulskis@ktu.lt
<b>Editorial Board</b>		
Hojjat Adeli	The Ohio State University, (United States)	adeli.1@osu.edu
Tahir Cetin Akinci	Istanbul Technical University, (Turkey)	cetinakinci@hotmail.com
Mahmoud Bayat	The University of Texas at Arlington, (United States)	ranjan@rowan.edu
Rafał Burdzik	Silesian University of Technology, (Poland)	rafal.burdzik@polsl.pl
Jinde Cao	Southeast University, (China)	jdcao@seu.edu.cn
Maosen Cao	Hohai University, (China)	cmszhy@hhu.edu.cn
Sezgin Ersoy	Marmara University, (Turkey)	ersoy@marmara.edu.tr
Hee-Chang Eun	Kangwon National University, (South Korea)	heechang@kangwon.ac.kr
Wen-Hsiang Hsieh	National Formosa University, (Taiwan)	allen@nfu.edu.tw
Vassilios Kappatos	Center for Research and Technology Hellas, (Greece)	vkappatos@certh.gr
Sunil Kumar	National Institute of Technology, (India)	skumar.math@nitjsr.ac.in
Giedrius Laukaitis	Kaunas University of Technology, (Lithuania)	giedrius.laukaitis@ktu.lt
Petr Lepšik	Technical University of Liberec, (Czechia)	petr.lepsik@tul.cz
Chen Lu	Beihang University, (China)	luchen@buaa.edu.cn
Doina Pisla	Technical University of Cluj-Napoca, (Romania)	doina.pisla@mep.utcluj.ro
Vinayak Ranjan	University of Pittsburgh at Bradford PA, (United States)	vinayak.ranjan@bennett.edu.in
Julia Irene Real	Politechnical University of Valencia, (Spain)	jureaher@tra.upv.es
Eligijus Sakalauskas	Kaunas University of Technology, (Lithuania)	eligijus.sakalauskas@ktu.lt
G. Eduardo Sandoval-Romero	The National Autonomous University of Mexico, (Mexico)	eduardo.sandoval@ccadet.unam.mx
Reza Serajian	University of California, (United States)	rsera004@ucr.edu
Tadas Telksnys	Kaunas University of Technology, (Lithuania)	tadas.telksnys@ktu.lt
Agnieszka Wylomanska	Wroclaw University of Technology, (Poland)	agnieszka.wylomanska@pwr.edu.pl
Xiao-Jun Yang	China University of Mining and Technology, (China)	xjyang@cumt.edu.cn

# **MME Mathematical Models in Engineering**

## **Aims and Scope**

MME publishes mathematical results which have relevance to engineering science and technology. Formal descriptions of mathematical models related to engineering problems, as well as results related to engineering applications are equally encouraged.

Applications of mathematical models in financial engineering, mechanical and aerospace engineering, bioengineering, chemical engineering, computer engineering, electrical engineering, industrial engineering and manufacturing systems, nonlinear science and technology are especially encouraged.

Mathematical models of interest include, but are not limited to, ordinary and partial differential equations, nonlinear analysis, stochastic processes, calculus of variations, operations research.

**All published papers are peer reviewed and crosschecked by plagiarism detection tools.**

More information is available online <https://www.extrica.com/journal/mme>

## **The journal material is referred:**

**Scopus:** ELSEVIER Bibliographic Database

**EBSCO:** Discovery Services (Complementary Index)

**Gale Cengage Learning:**

Academic OneFile Custom Periodical

Computer Database

Science in Context

**Scilit:** <https://www.scilit.net>

**Asian Science Citation Index (ASCI):** <https://ascidatabase.com>

**Dimensions:** <https://www.dimensions.ai>

**Semantic Scholar:** <https://www.semanticscholar.org>

**Google Scholar:** <https://scholar.google.com>

**JGate:** <https://jgateplus.com>

**CORE:** <https://core.ac.uk>

**BASE (Bielefeld Academic Search Engine):** <https://www.base-search.net>

**Ulrich's Periodicals Directory:** <https://ulrichsweb.serialssolutions.com>

**CNKI Scholar:** <http://eng.scholar.cnki.net>

**cnplINKer (CNPIEC):** <http://cnplinker.cnpeak.com>

**WanFang Data:** <https://www.wanfangdata.com.cn>

**TDNet:** <https://www.tdnet.io>

**MIAR, Universitat de Barcelona:** <https://miar.ub.edu>

**JournalTOCs:** <https://www.journaltoocs.ac.uk>

**WorldCat Discovery Services:** <https://www.oclc.org/en/worldcat-discovery.html>

**Crossref:** <https://search.crossref.org>

Content is archived in **Martynas Mazvydas National Library of Lithuania**

**Internet:** <https://www.extrica.com>

**E-mail:** [publish@extrica.com](mailto:publish@extrica.com)

**Publisher:** Extrica

## Contents

<b>EFFECT OF PARAMETRIC MODULATION ON THE STABILITY OF A PERIODIC OSCILLATOR: A STUDY WITH AIRY FUNCTIONS</b>	<b>176</b>
RAFAEL IVAN AYALA-FIGUEROA, ARTURO ALEJANDRO CHÁVEZ-MURGA, JESUS ELIAS MIRANDA-VEGA, RUBEN CASTRO-CONTRERAS, GUILLERMO PRIETO-AVALOS	
<b>METHODS TO INCREASE THE THROUGHPUT AND CARRYING CAPACITY OF THE “ANGREN-POP” RAILWAY SECTION IN LINE WITH EXPECTED TRANSIT FREIGHT FLOWS FROM THE “CHINA-UZBEKISTAN-KYRGYZSTAN” RAILWAY PROJECT</b>	<b>187</b>
UTKIR KHUSENOV, MA’SUD MASHARIPOV, SHINPOLAT SUYUNBAYEV, JAMSHID TOYCHIYEV	
<b>ARTIFICIAL INTELLIGENCE-BASED STOCK MARKET PRICE PREDICTION, A REVIEW</b>	<b>204</b>
VISHWAS H N, USHA B A, SANGEETHA K N	
<b>KINEMATIC AND FORCE ANALYSIS OF A SCISSOR LIFT MECHANISM</b>	<b>230</b>
VOLODYMYR GURSKYI, VOLODYMYR KUZO, NADIHA MAHERUS, PAVLO KROT	
<b>NUMERICAL STUDY OF HEAT AND MASS TRANSFER IN A RELIEF PIPELINE WITH VARIABLE DIAMETER</b>	<b>243</b>
ISMATULLA KHUJAEV, MUZAFFAR HAMDAMOV, SHOHJAXON RAVSHANOV	



SHORT DESCRIPTION ABOUT THIS CATEGORY

Mathematical modelling helps to create a mathematical representation of a real-world scenario to make a prediction or provide insight into the complex behavior of real-world systems. The journal publishes mathematical results which have relevance to engineering science and technology. Mathematical models of interest include, but are not limited to, ordinary and partial differential equations, nonlinear analysis, stochastic processes, calculus of variations, and operations research.

