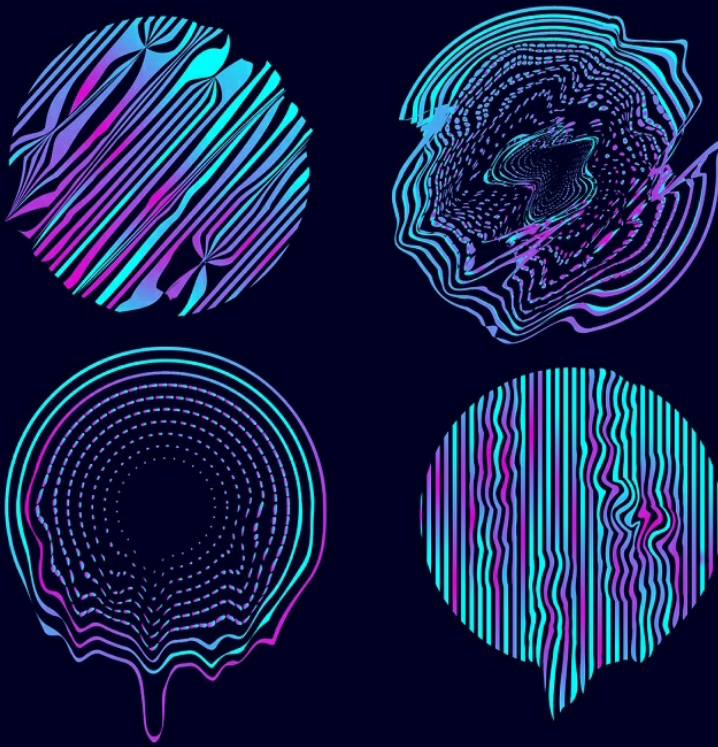


Applied Mathematics

Interdisciplinary Applications of Mathematics

Mathematical Models in Engineering



Editor in Chief

Minvydas Ragulskis Kaunas University of Technology, (Lithuania) minvydas.ragulskis@ktu.lt

Editorial Board

Hojjat Adeli The Ohio State University, (United States) adeli.1@osu.edu
Tahir Cetin Akinci Istanbul Technical University, (Turkey) cetinakinci@hotmail.com
Mahmoud Bayat The University of Texas at Arlington, (United States) ranjan@rowan.edu
Jinde Cao Southeast University, (China) jdcao@seu.edu.cn
Maosen Cao Hohai University, (China) cmszhy@hhu.edu.cn
Sezgin Ersoy Marmara University, (Turkey) sersoy@marmara.edu.tr
Hee-Chang Eun Kangwon National University, (South Korea) heechang@kangwon.ac.kr
Wen-Hsiang Hsieh National Formosa University, (Taiwan) allen@nfu.edu.tw
Audrius Kabasinskas Kaunas University of Technology, (Lithuania)
Vassilios Kappatos Center for Research and Technology Hellas, (Greece) vkappatos@certh.gr
Sunil Kumar National Institute of Technology, (India) skumar.math@nitjsr.ac.in
Giedrius Laukaitis Kaunas University of Technology, (Lithuania) giedrius.laukaitis@ktu.lt
Petr Lepšik Technical University of Liberec, (Czechia) petr.lepsik@tul.cz
Chen Lu Beihang University, (China) luchen@buaa.edu.cn
Doina Pisla Technical University of Cluj-Napoca, (Romania) doina.pisla@mep.utcluj.ro
Vinayak Ranjan University of Pittsburgh at Bradford PA, (United States) vinayak.ranjan@bennett.edu.in
Julia Irene Real Politechnical University of Valencia, (Spain) jureaher@tra.upv.es
Eligijus Sakalauskas Kaunas University of Technology, (Lithuania) eligijus.sakalauskas@ktu.lt
G. Eduardo Sandoval-Romero The National Autonomous University of Mexico, (Mexico) eduardo.sandoval@ccadet.unam.mx
Reza Serajian University of California, (United States) rsera004@ucr.edu
Tadas Telksnys Kaunas University of Technology, (Lithuania) tadas.telksnys@ktu.lt
Agnieszka Wylomanska Wroclaw University of Technology, (Poland) agnieszka.wylomanska@pwr.edu.pl
Xiao-Jun Yang China University of Mining and Technology, (China) xjyang@cumt.edu.cn

MME Mathematical Models in Engineering

Aims and Scope

MME publishes mathematical results which have relevance to engineering science and technology. Formal descriptions of mathematical models related to engineering problems, as well as results related to engineering applications are equally encouraged.

Applications of mathematical models in financial engineering, mechanical and aerospace engineering, bioengineering, chemical engineering, computer engineering, electrical engineering, industrial engineering and manufacturing systems, nonlinear science and technology are especially encouraged.

Mathematical models of interest include, but are not limited to, ordinary and partial differential equations, nonlinear analysis, stochastic processes, calculus of variations, operations research.

All published papers are peer reviewed and crosschecked by plagiarism detection tools.

More information is available online <https://www.extrica.com/journal/mme>

The journal material is referred:

Scopus: ELSEVIER Bibliographic Database

EBSCO: Discovery Services (Complementary Index)

Gale Cengage Learning:

Academic OneFile Custom Periodical

Computer Database

Science in Context

Scilit: <https://www.scilit.net>

Asian Science Citation Index (ASCI): <https://ascidatabase.com>

Dimensions: <https://www.dimensions.ai>

Semantic Scholar: <https://www.semanticscholar.org>

Google Scholar: <https://scholar.google.com>

JGate: <https://jgateplus.com>

CORE: <https://core.ac.uk>

BASE (Bielefeld Academic Search Engine): <https://www.base-search.net>

Ulrich's Periodicals Directory: <https://ulrichsweb.serialssolutions.com>

CNKI Scholar: <http://eng.scholar.cnki.net>

cnPLINKer (CNPIEC): <http://cnlinker.cnpeak.com>

WanFang Data: <https://www.wanfangdata.com.cn>

TDNet: <https://www.tdnet.io>

MIAR, Universitat de Barcelona: <https://miar.ub.edu>

JournalTOCs: <https://www.journaltoCs.ac.uk>

WorldCat Discovery Services: <https://www.oclc.org/en/worldcat-discovery.html>

Crossref: <https://search.crossref.org>

Content is archived in **Martynas Mazvydas National Library of Lithuania**

Internet: <https://www.extrica.com>

E-mail: publish@extrica.com

Publisher: Extrica

Contents

A NEW PERSPECTIVE ON SHEAR DEFORMATION IN A SIMPLY SUPPORTED ISOTROPIC PLATES: STATIC BENDING AND CRITICAL LOAD DETERMINATION	1
F. C. ONYEKA, T. E. OKEKE, UZOR ONYIA	
ORGANIZATION OF EMPTY WAGON DELIVERY TECHNOLOGY IN THE LOGISTICS NETWORK	26
JAMSHID BAROTOV, JAMSHID KOBULOV	
THE EFFECTIVENESS OF THE PI-PSO CONTROLLER FOR CYLINDRICAL PIPE SYSTEM IDENTIFICATION MODEL IN NARX SYSTEM	37
FIRAS ALI JASIM, MOHAMMED JAWAD MOHAMMED, HATAM KAREEM KADHOM	
NUMERICAL SIMULATION OF A MODIFIED SCULLA HYDROCYCLONE USING THE GEKO $k-\omega$ TURBULENCE MODEL	56
MURODIL MADALIEV, ZOKHIDJON ABDULKHAEV, DILBAR ABDURAIMOVA, HASAN OCHILOV, TURSUNOY APAKHODJAEVA, ELDORBЕК UMRONOV	

SHORT DESCRIPTION ABOUT THIS CATEGORY

Mathematical modelling helps to create a mathematical representation of a real-world scenario to make a prediction or provide insight into the complex behavior of real-world systems. The journal publishes mathematical results which have relevance to engineering science and technology. Mathematical models of interest include, but are not limited to, ordinary and partial differential equations, nonlinear analysis, stochastic processes, calculus of variations, and operations research.

