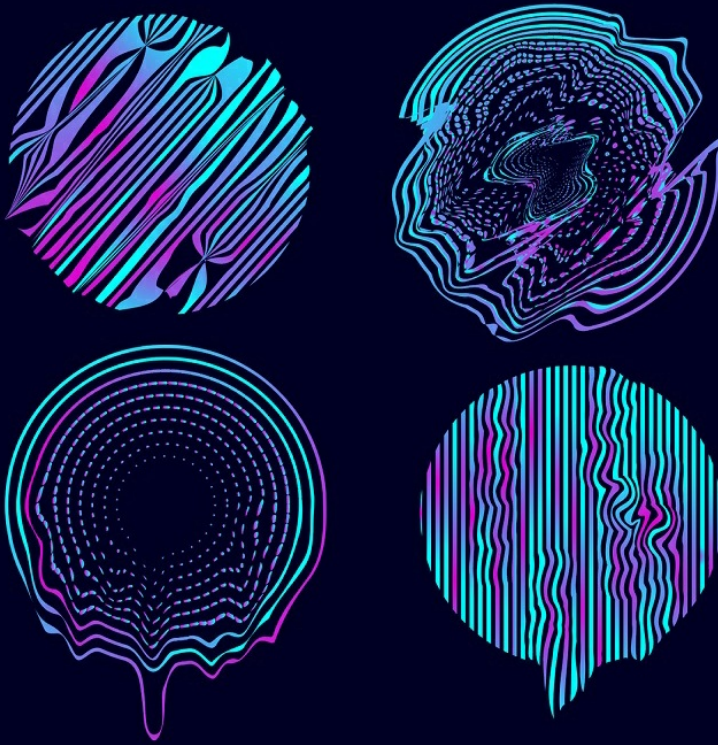


Applied Mathematics

Interdisciplinary Applications of Mathematics

Mathematical Models in Engineering



Editor in Chief

Minvydas Ragulskis Kaunas University of Technology, (Lithuania) minvydas.ragulskis@ktu.lt

Editorial Board

| | | |
|----------------------------|--|---------------------------------|
| Hojjat Adeli | The Ohio State University, (United States) | adeli.1@osu.edu |
| Tahir Cetin Akinci | Istanbul Technical University, (Turkey) | cetinakinci@hotmail.com |
| Mahmoud Bayat | The University of Texas at Arlington, (United States) | ranjan@rowan.edu |
| Jinde Cao | Southeast University, (China) | jdcao@seu.edu.cn |
| Maosen Cao | Hohai University, (China) | cmszhy@hhu.edu.cn |
| Sezgin Ersoy | Marmara University, (Turkey) | ersoy@marmara.edu.tr |
| Hee-Chang Eun | Kangwon National University, (South Korea) | heechang@kangwon.ac.kr |
| Wen-Hsiang Hsieh | National Formosa University, (Taiwan) | allen@nfu.edu.tw |
| Audrius Kabasinskas | Kaunas University of Technology, (Lithuania) | |
| Vassilios Kappatos | Center for Research and Technology Hellas, (Greece) | vkappatos@certh.gr |
| Sunil Kumar | National Institute of Technology, (India) | skumar.math@nitjsr.ac.in |
| Giedrius Laukaitis | Kaunas University of Technology, (Lithuania) | giedrius.laukaitis@ktu.lt |
| Petr Lepšik | Technical University of Liberec, (Czechia) | petr.lepsik@tul.cz |
| Chen Lu | Beihang University, (China) | luchen@buaa.edu.cn |
| Doina Pisla | Technical University of Cluj-Napoca, (Romania) | doina.pisla@mep.utcluj.ro |
| Vinayak Ranjan | University of Pittsburgh at Bradford PA, (United States) | vinayak.ranjan@bennett.edu.in |
| Julia Irene Real | Politechnical University of Valencia, (Spain) | jureaher@tra.upv.es |
| Eligijus Sakalauskas | Kaunas University of Technology, (Lithuania) | eligijus.sakalauskas@ktu.lt |
| G. Eduardo Sandoval-Romero | The National Autonomous University of Mexico, (Mexico) | eduardo.sandoval@ccadet.unam.mx |
| Reza Serajian | University of California, (United States) | rsera004@ucr.edu |
| Tadas Telksnys | Kaunas University of Technology, (Lithuania) | tadas.telksnys@ktu.lt |
| Agnieszka Wylomanska | Wroclaw University of Technology, (Poland) | agnieszka.wylomanska@pwr.edu.pl |
| Xiao-Jun Yang | China University of Mining and Technology, (China) | xjyang@cumt.edu.cn |

MME Mathematical Models in Engineering

Aims and Scope

MME publishes mathematical results which have relevance to engineering science and technology. Formal descriptions of mathematical models related to engineering problems, as well as results related to engineering applications are equally encouraged.

Applications of mathematical models in financial engineering, mechanical and aerospace engineering, bioengineering, chemical engineering, computer engineering, electrical engineering, industrial engineering and manufacturing systems, nonlinear science and technology are especially encouraged.

Mathematical models of interest include, but are not limited to, ordinary and partial differential equations, nonlinear analysis, stochastic processes, calculus of variations, operations research.

All published papers are peer reviewed and crosschecked by plagiarism detection tools.

More information is available online <https://www.extrica.com/journal/mme>

The journal material is referred:

Scopus: ELSEVIER Bibliographic Database

EBSCO: Discovery Services (Complementary Index)

Gale Cengage Learning:

Academic OneFile Custom Periodical

Computer Database

Science in Context

Scilit: <https://www.scilit.net>

Asian Science Citation Index (ASCI): <https://ascidatabase.com>

Dimensions: <https://www.dimensions.ai>

Semantic Scholar: <https://www.semanticscholar.org>

Google Scholar: <https://scholar.google.com>

JGate: <https://jgateplus.com>

CORE: <https://core.ac.uk>

BASE (Bielefeld Academic Search Engine): <https://www.base-search.net>

Ulrich's Periodicals Directory: <https://ulrichsweb.serialssolutions.com>

CNKI Scholar: <http://eng.scholar.cnki.net>

cnPLINKer (CNPIEC): <http://cnlinker.cnpeak.com>

WanFang Data: <https://www.wanfangdata.com.cn>

TDNet: <https://www.tdnet.io>

MIAR, Universitat de Barcelona: <https://miar.ub.edu>

JournalTOCs: <https://www.journaltoCs.ac.uk>

WorldCat Discovery Services: <https://www.oclc.org/en/worldcat-discovery.html>

Crossref: <https://search.crossref.org>

Content is archived in **Martynas Mazvydas National Library of Lithuania**

Internet: <https://www.extrica.com>

E-mail: publish@extrica.com

Publisher: Extrica

Contents

| | |
|---|------------|
| EVALUATING CENTRIFUGAL HYDROCYCLONES FOR FILTRATION IN AGROECOLOGICAL DRIP IRRIGATION SYSTEMS | 72 |
| ZOKHIDJON ABDULKHAEV, YUNUSALI KHUSANOV, ISLOMION TOHIROV, MADALIEV ERKIN, RUSTAM MEDATOV | |
| ENHANCED BROKEN-BAR FAULT DIAGNOSIS IN ASYNCHRONOUS MOTORS USING SVM CLASSIFICATION | 87 |
| AHMED AMRANE, ALI CHABANE, KHALED BENFRIHA, TAHA CHETTIBI | |
| AERODYNAMIC PERFORMANCE OF A 30P30N THREE-ELEMENT AIRFOIL USING THE RANS-SST TURBULENCE MODEL | 108 |
| MURODIL MADALIEV, JAMOLDIN AKHMEDOV, AKHROR AKRAMOV, ISLOMION TOHIROV, ODILJON ODILOV, ULUGBEK ABDURAKHMONOV | |
| NON-INTRUSIVE APPLIANCE HEALTH MONITORING AND REMAINING USEFUL LIFE PREDICTION USING A DRN-TRANSFORMER MODEL | 125 |
| XIHUAN SU, ANTONETTE VILLAPANDO CHUA, ANTON LOUISE DE OCAMPO, RALPH GERARD B. SANGALANG, OLIVER LEXTER JULY A. JOSE, DIANYOU KANG | |
| MATHEMATICAL MODEL FOR EVALUATING TEMPERATURE STRESSES IN CONCRETE BRIDGE BEAMS STRENGTHENED WITH EXTERNAL REINFORCEMENT ADHERED WITH METHYL METHACRYLATE COMPOSITIONS | 147 |
| VITALII KOVALCHUK, YURIY HNATIV, OLEKSII RYKOVTSSEV, MAKSYM KOVAL, ARTUR ONYSHCHENKO | |
| A DEFORMABLE DERIVATIVE APPROACH TO EULER'S THEOREM FOR HOMOGENEOUS FUNCTIONS AND ITS EXTENSION TO HIGHER ORDER PARTIAL DERIVATIVES | 159 |
| ANJU DHIRAJ KUMAR NAIDU, ANISA AHMAD, AMIT UJLAYAN | |
| NUMERICAL SIMULATION OF MOTORCYCLE AERODYNAMICS USING OPENFOAM SOFTWARE | 175 |
| MURODIL MADALIEV, BOBUR BAKHTIYOROV, JAMSHID OBIDOV, QAKHRAMON MASODIQOV, JAMOLIDDIN AKRAMOV, ZOKHIDJON ABDULKHAEV | |
| ADVANCED GEOSPATIAL MONITORING OF OIL AND GAS INFRASTRUCTURE VIA SATELLITE DATA | 190 |
| MARKHABO SHUKUROVA, MIRAZIZ TALIPOV, KHAMROKUL RUZIEV, KAMILA JURAYEVA | |

| | |
|---|------------|
| ANALYTICAL METHOD FOR STUDYING FREE VIBRATIONS OF ROUND PLATES ON A NON-HOMOGENEOUS ELASTIC FOUNDATION | 202 |
| YURII KRUTII, ALLA PERPERI, ROMAN KACHMAR, ROSTYSLAV PREDKO, DANYLO VELYCHKO | |

SHORT DESCRIPTION ABOUT THIS CATEGORY

Mathematical modelling helps to create a mathematical representation of a real-world scenario to make a prediction or provide insight into the complex behavior of real-world systems. The journal publishes mathematical results which have relevance to engineering science and technology. Mathematical models of interest include, but are not limited to, ordinary and partial differential equations, nonlinear analysis, stochastic processes, calculus of variations, and operations research.

