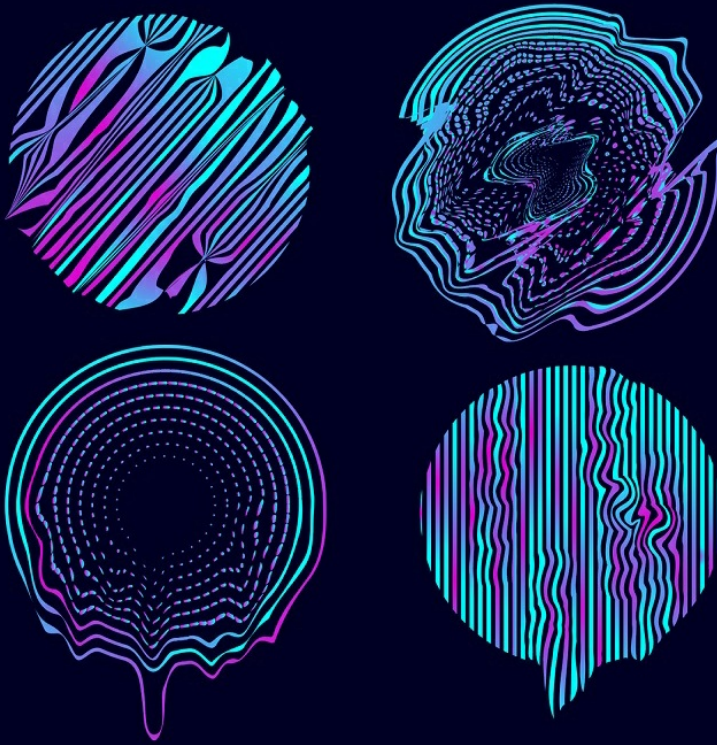


Applied Mathematics

Interdisciplinary Applications of Mathematics

Mathematical Models in Engineering



Editor in Chief

Minvydas Ragulskis Kaunas University of Technology, (Lithuania) minvydas.ragulskis@ktu.lt

Editorial Board

Hojjat Adeli	The Ohio State University, (USA)	adeli.1@osu.edu
Tahir Cetin Akinci	Istanbul Technical University, (Turkey)	cetinakinci@hotmail.com
Mahmoud Bayat	The University of Texas at Arlington, (USA)	ranjan@rowan.edu
Rafał Burdzik	Silesian University of Technology, (Poland)	rafal.burdzik@polsl.pl
Maosen Cao	Hohai University, (China)	cmszhy@hhu.edu.cn
Jinde Cao	Southeast University, (China)	jdcao@seu.edu.cn
Sezgin Ersoy	Technische Universität Braunschweig, (Germany)	ersoy@marmara.edu.tr
Hee-Chang Eun	Kangwon National University, (Korea)	heechang@kangwon.ac.kr
W. H. Hsieh	National Formosa University, (Taiwan)	allen@nfu.edu.tw
Vassilis Kappatos	Center for Research and Technology Hellas, (Greece)	vkappatos@certh.gr
Sunil Kumar	National Institute of Technology, (India)	skumar.math@nitjsr.ac.in
Giedrius Laukaitis	Kaunas University of Technology, (Lithuania)	giedrius.laukaitis@ktu.lt
Petr Lepšík	Technical University of Liberec, (Czech Republic)	petr.lepsik@tul.cz
Chen Lu	Beihang University, (China)	luchen@buaa.edu.cn
Guang-qing Lu	School of Intelligent Systems Science and Engineering, Jinan University, (China)	tgqluyp@jnu.edu.cn
Yuxin Mao	Zhejiang Gongshang University, (China)	maoyuxin@zjgsu.edu.cn
Doina Pisla	Technical University of Cluj-Napoca, (Romania)	doina.pisla@mep.utcluj.ro
Vinayak Ranjan	Bennett University, (India)	vinayak.ranjan@bennett.edu.in
Julia Irene Real	Politechnical University of Valencia, (Spain)	jureaher@tra.upv.es
Eligijus Sakalauskas	Kaunas University of Technology, (Lithuania)	eligijus.sakalauskas@ktu.lt
G. Eduardo Sandoval-Romero	The National Autonomous University of Mexico, (Mexico)	eduardo.sandoval@ccadet.unam.mx
Reza Serajian	University of California, (USA)	rsera004@ucr.edu
Shigeki Toyama	Tokyo A&T University, (Japan)	toyama@cc.tuat.ac.jp
Agnieszka Wylomanska	Wroclaw University of Technology, (Poland)	agnieszka.wylomanska@pwr.edu.pl
Xiao-Jun Yang	China University of Mining and Technology, (China)	dyangxiaojun@163.com

MME Mathematical Models in Engineering

Aims and Scope

MME publishes mathematical results which have relevance to engineering science and technology. Formal descriptions of mathematical models related to engineering problems, as well as results related to engineering applications are equally encouraged.

Applications of mathematical models in financial engineering, mechanical and aerospace engineering, bioengineering, chemical engineering, computer engineering, electrical engineering, industrial engineering and manufacturing systems, nonlinear science and technology are especially encouraged.

Mathematical models of interest include, but are not limited to, ordinary and partial differential equations, nonlinear analysis, stochastic processes, calculus of variations, operations research.

All published papers are peer reviewed and crosschecked by plagiarism detection tools.

More information is available online <https://www.extrica.com/journal/mme>

The journal material is referred:

Scopus: ELSEVIER Bibliographic Database

EBSCO: Discovery Services (Complementary Index)

Gale Cengage Learning:

Academic OneFile Custom Periodical

Computer Database

Science in Context

Scilit: <https://www.scilit.net>

Asian Science Citation Index (ASCI): <https://ascidatabase.com>

Dimensions: <https://www.dimensions.ai>

Semantic Scholar: <https://www.semanticscholar.org>

Google Scholar: <https://scholar.google.com>

JGate: <https://jgateplus.com>

CORE: <https://core.ac.uk>

BASE (Bielefeld Academic Search Engine): <https://www.base-search.net>

Ulrich's Periodicals Directory: <https://ulrichsweb.serialssolutions.com>

CNKI Scholar: <http://eng.scholar.cnki.net>

cnPLINKer (CNPIEC): <http://cnlinker.cnpeak.com>

WanFang Data: <https://www.wanfangdata.com.cn>

TDNet: <https://www.tdnet.io>

MIAR, Universitat de Barcelona: <https://miar.ub.edu>

JournalTOCs: <https://www.journaltoocs.ac.uk>

WorldCat Discovery Services: <https://www.oclc.org/en/worldcat-discovery.html>

MyScienceWork: <https://www.mysciencework.com>

Crossref: <https://search.crossref.org>

Content is archived in **Martynas Mazvydas National Library of Lithuania**

Internet: <https://www.extrica.com>

E-mail: publish@extrica.com

Publisher: Extrica

Contents

RESEARCH ON ROAD DAMAGE RECOGNITION AND CLASSIFICATION BASED ON IMPROVED VGG-19	115
JIAQI WANG, KAIHANG WANG, KEXIN LI	
JOINT EFFECTS OF THERMAL DIFFUSION AND DIFFUSION THERMO ON MHD THREE DIMENSIONAL NANOFLUID FLOW TOWARDS A STRETCHING SHEET	130
G. MURALI, G. DEEPA, NIRMALA KASTURI V, T. POORNAKANTHA	
A THIRD-ORDER SHEAR DEFORMATION PLATE BENDING FORMULATION FOR THICK PLATES: FIRST PRINCIPLES DERIVATION AND APPLICATIONS	144
CHARLES CHINWUBA IKE	
A MATHEMATICAL MODEL AND MICROCONTROLLER-BASED METHOD FOR MEASURING DIELECTRIC PERMITTIVITY AND DISCHARGE CHARACTERISTICS WITH ARDUINO ATMEGA 328: A CASE STUDY IN A PHYSICS LABORATORY	169
VALENTINUS GALIH VIDIA PUTRA, NGADIYONO	
RESEARCH ON LIGHTWEIGHT PEDESTRIAN DETECTION BASED ON IMPROVED YOLOv5	178
YUNFENG JIN, ZHIZHAN LU, RUILI WANG, CHAO LIANG	
AN EFFICIENCY CALCULATION MODEL FOR BALL SCREWS BY ACCOUNTING FOR LEAD ERRORS	188
YISHEN ZHANG, CHANGGUANG ZHOU, HUTIAN FENG	
PRODUCTION ANALYSIS OF MANUFACTURING INDUSTRY IN A SINGLE VACATION POLICY UNDER DISASTER	198
JEYAKUMAR S, LOGAPRIYA B	

SHORT DESCRIPTION ABOUT THIS CATEGORY

Mathematical modelling helps to create a mathematical representation of a real-world scenario to make a prediction or provide insight into the complex behavior of real-world systems. The journal publishes mathematical results which have relevance to engineering science and technology. Mathematical models of interest include, but are not limited to, ordinary and partial differential equations, nonlinear analysis, stochastic processes, calculus of variations, and operations research.

