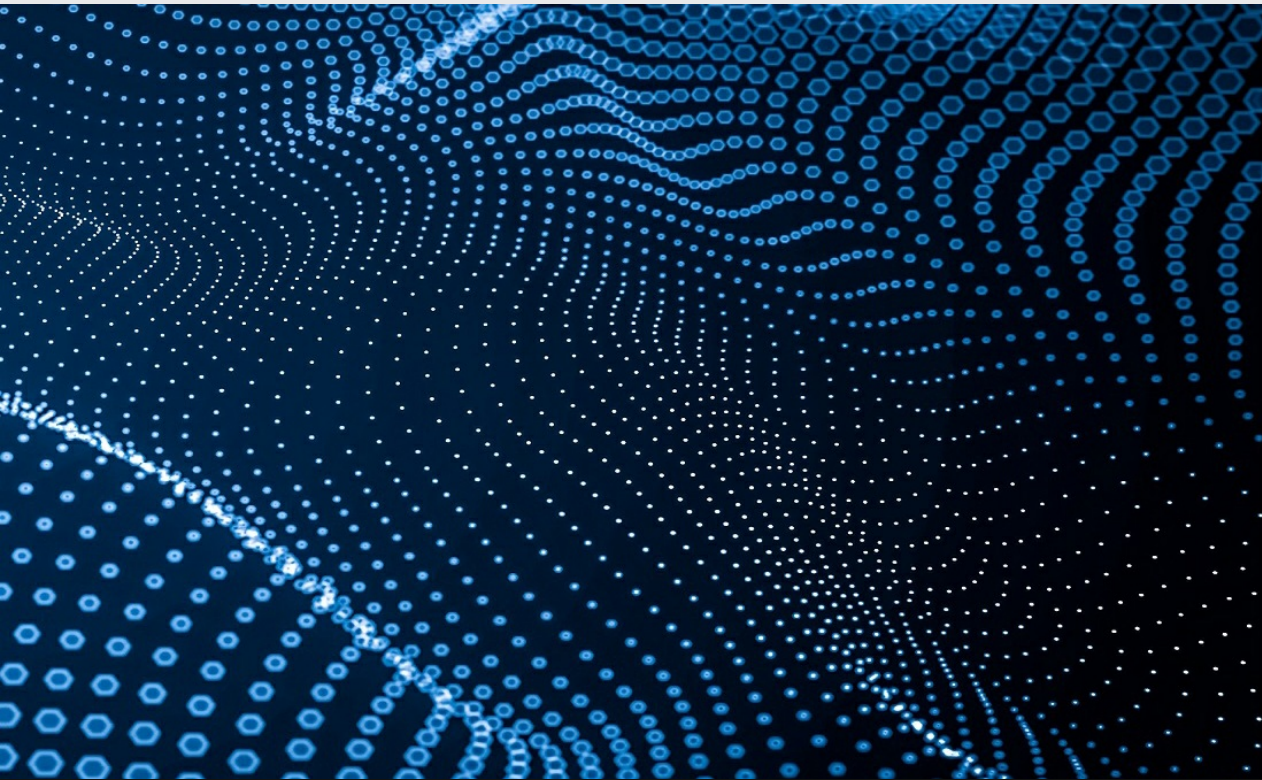


Multidisciplinary Engineering

Materials Sciences, Characterisation and Testing

Material Science, Engineering and Applications



Editor in Chief

Raghvendra Kumar Mishra

Shri Mata Vaishno Devi University, (India)

rkmishra@smdvu.ac.in

Editorial Board

Wael A. Altabey

Alexandria University, (Egypt)

wael.atabey@gmail.com

Yogesh K Chauhan

Kamla Nehru Institute of Technology, (India)

chauhanyk@yahoo.com

Avanish Kumar Dubey

Motilal Nehru National Institute of Technology Allahabad, (India)

avanish@mnnit.ac.in

Annamalai Gnanavelbabu

Anna University, (India)

agbabu@annauniv.edu

Tapan Kumar Gogoi

Tezpur University, (India)

tapan_g@tezu.enet.in

Sergey Gorbatyuk

National University of Science and Technology MISIS, (Russia)

gorbatyuk54@bk.ru

Suraj P Harsha

Indian Institute of Technology, Roorkee, (India)

surajfme@iitr.ernet.in

Sabah Khan

Jamia Millia Islamia University, (India)

skhan2@jmi.ac.in

Sandeep Kumar

Indian Institute of Technology, (India)

sandeep.mec@iitbhu.ac.in

Mohd Kamal Mohd Shah

Universiti Malaysia Sabah, (Malaysia)

mkamalms@ums.edu.my

Majid Mokhtari

Thiruvalluvar University, (Iran)

m-mokhtari@tvu.ac.ir

Srikanta Routroy

Birla Institute of Technology and Science, (India)

srikantaroutroy@gmail.com

Aashis Roy

S.S.Tegnoor PU & Degree College, (India)

aashisroy@gmail.com

Vishal Santosh Sharma

University of the Witwatersrand, (India)

vishal.sharma@wits.ac.za

Deepal Subasinghe

National Institute of Fundamental Studies, (Sri Lanka)

deepal.su@nifs.ac.lk

Srinivas Tangellapalli

National Institute of Technology Jalandhar, (India)

srinivast@nitj.ac.in

Indra Narayan Yadav

Tribhuvan University, (Nepal)

indra.yadav@pcampus.edu.np

MSEA Material Science, Engineering and Applications

Aims and Scope

MSEA is developed to publish and disseminate original research articles on the latest developments in materials science and engineering. The Journal publishes reviews and full-length papers reporting research results on, or techniques for, studying the relationship between structure, properties, and uses of materials.

The list of principal topics:

- Polymer matrix composite
- Metal matrix composite
- Ceramic-matrix composites
- Nano-materials and nanotechnology
- Smart materials/structures
- Advanced energy materials and energy harvesting materials
- Microstructure and mechanical properties, heat treatments, creep, fatigue, fracture, friction and wear, corrosion, coatings, material selection, etc.
- Mathematical modeling, novel applications, and numerical simulation of advanced materials and structures
- Methods of optimum design of materials and structures

All published papers are peer reviewed and crosschecked by plagiarism detection tools.

More information is available online <https://www.extrica.com/journal/msea>

The journal material is referred:

Scilit: <https://www.scilit.net>

Dimensions: <https://www.dimensions.ai>

Google Scholar: <https://scholar.google.com>

WanFang Data: <https://www.wanfangdata.com.cn>

JGate: <https://jgateplus.com>

CORE: <https://core.ac.uk>

TDNet: <https://www.tdnet.io>

WorldCat Discovery Services: <https://www.oclc.org/en/worldcat-discovery.html>

MyScienceWork: <https://www.mysciencework.com>

Crossref: <https://search.crossref.org>

Content is archived in **Martynas Mazvydas National Library of Lithuania**

Internet: <https://www.extrica.com>

E-mail: publish@extrica.com

Publisher: Extrica

MSEA

Material Science,
Engineering and
Applications

DECEMBER 2024. VOLUME 4, ISSUE 1, PAGES (1-15), ISSN ONLINE 2669-2570

Contents

MODELLING AND OPTIMIZATION OF THE EFFECT OF RICE HUSK ASH ON THE CALIFORNIA BEARING RATIO OF AGBANI SOIL USING SCHEFFE'S METHOD CHIJOKE AMBROSE DIUGWU, CHARLES CHINWUBA IKE	1
--	----------

SHORT DESCRIPTION ABOUT THIS CATEGORY

Original research articles on the latest developments in materials science and engineering. The Journal publishes reviews and full-length papers reporting research results on, or techniques for, studying the relationship between structure, properties, and uses of materials.

